

安吉尔 ANGEL

高端净水专家

Focus on clean drinking water for 35 years

Best-selling in 65 countries such as Japan and the United States.

Win the choice of 200 million customers around the world

安吉尔 ANGEL

高端净水专家

Angel has committed to make clean drinking water for 33 years

33 YEARS COMMITTED TO PURIFIED DRINKING WATER

Sixty

Covers an area of 600 thousand m

Fifty-five

Billion to build a new industrial base

One thousand five hundred

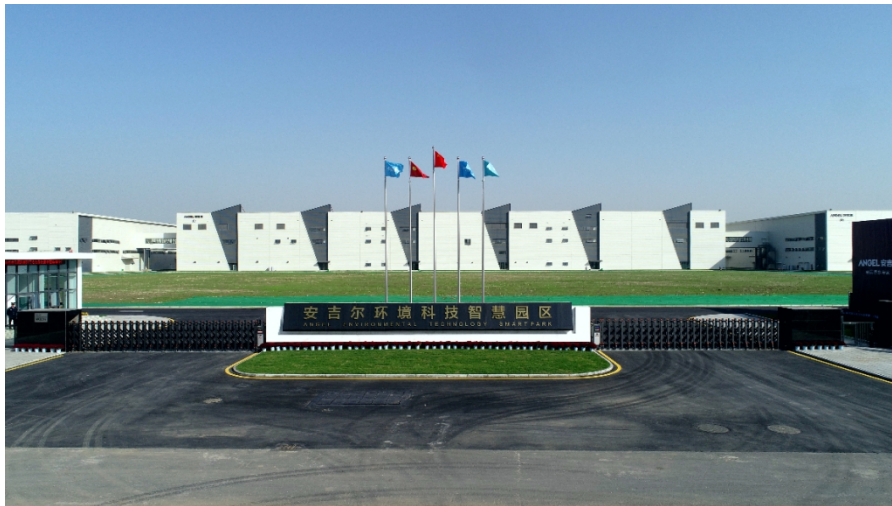
Production capacity of ten thousand sets of accessories

One thousand

Production capacity of 10,000 sets of complete machines

Twelve

Billion/year sales revenue



Shaoxing Angel Drinking Water Purifying Technology Co., Ltd. mainly produces Angel brand (top 500 Asian brands) water dispensers for home and business and export hot and cold water dispensers, coffee machines and related injection molding, metal and other components. The factory has a full set of assembly production lines for mold processing, sheet metal stamping, laser cutting, metal stretching, welding, surface treatment, injection molding and more than a dozen advanced clean drinking water as well as home appliance, with an annual production of 15 million sets of accessories and 10 million sets.

Angel has committed to make clean drinking water for 33 years

33 YEARS COMMITTED TO PURIFIED DRINKING WATERC

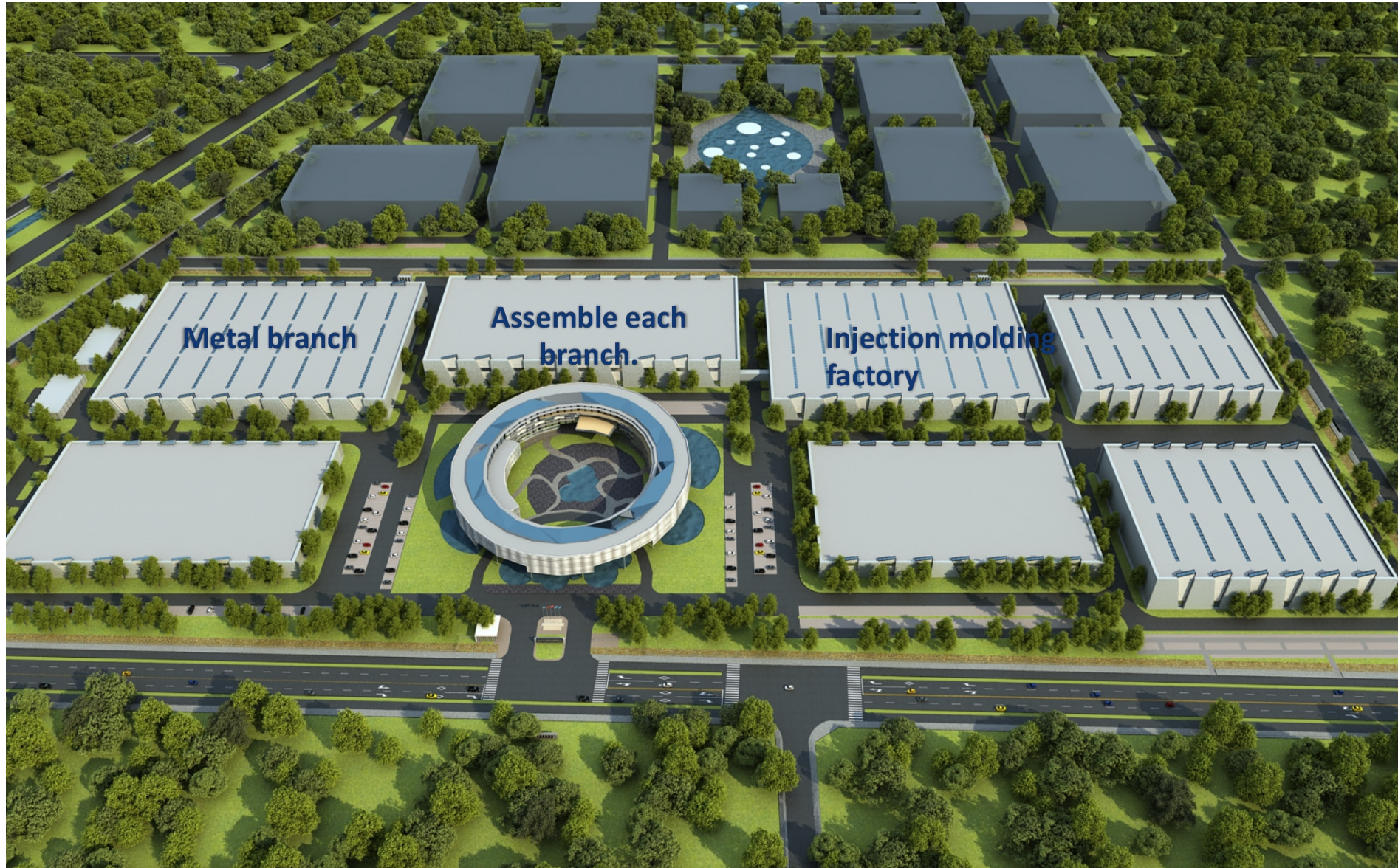


The company is located in Shaoxing Binhai New Town Development Zone, part of the economic circle around Hangzhou Bay, with a **total investment** of 5.5 billion yuan. The first **phase** covers an area of about 380 mu. After the **project is completed, it will become the production base and R&D center** of Angel Group.

Angel will promote the Industry 4.0 upgrading of clean drinking water industry in Binhai New Area in full swing. We will build an intelligent assembly base and a core component production base that meet the Industry 4.0 standard, and carry out intelligent product design and service information management of the Internet of Things.

Angel focused on clean drinking water for 33 years

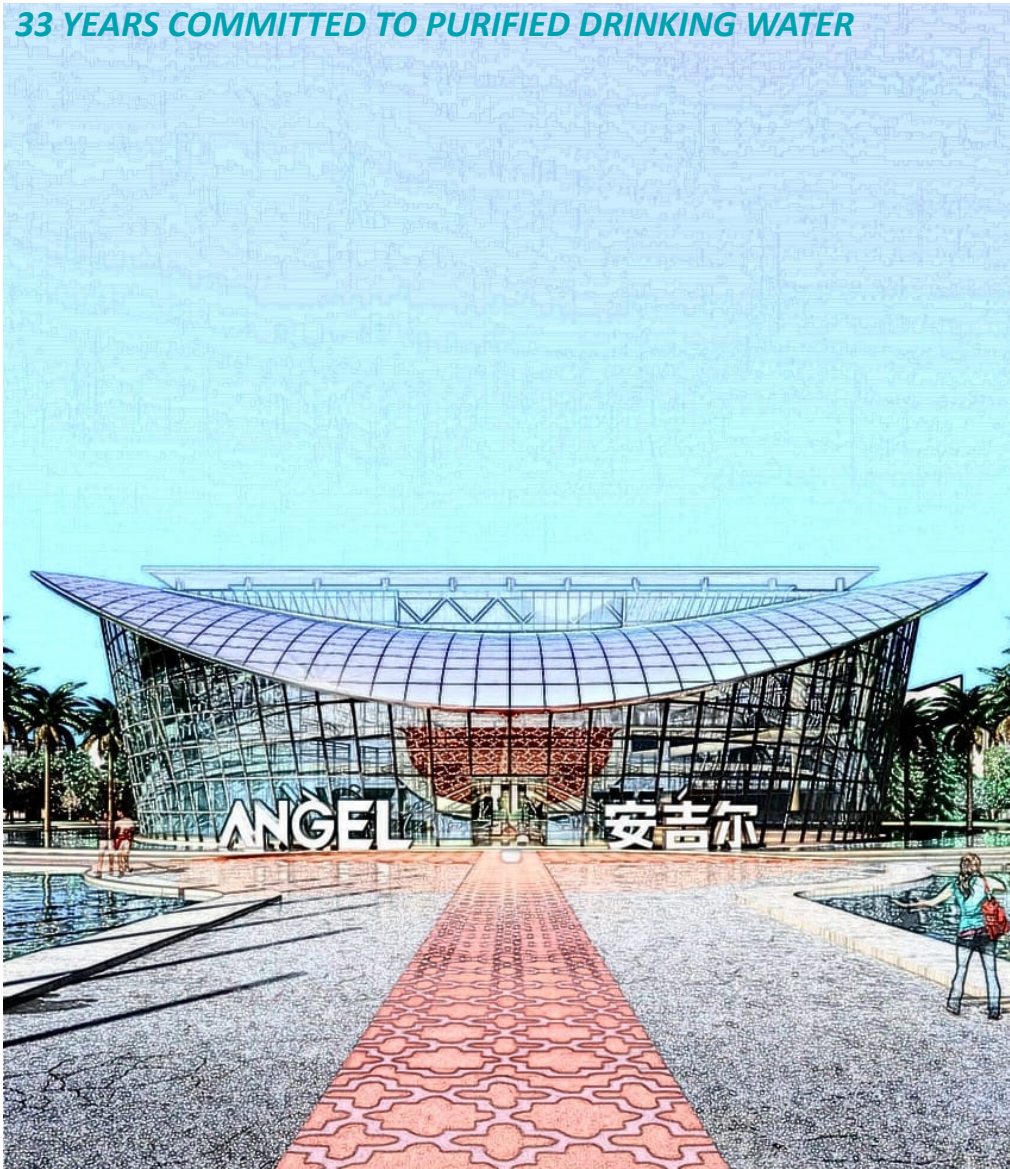
33 YEARS COMMITTED TO PURIFIED DRINKING WATER



1. At present, the metal factory, injection factory, business machine factory, water purification factory and drinking water factory of the first phase project of the company have been completed, and some automation equipment has been installed in place.

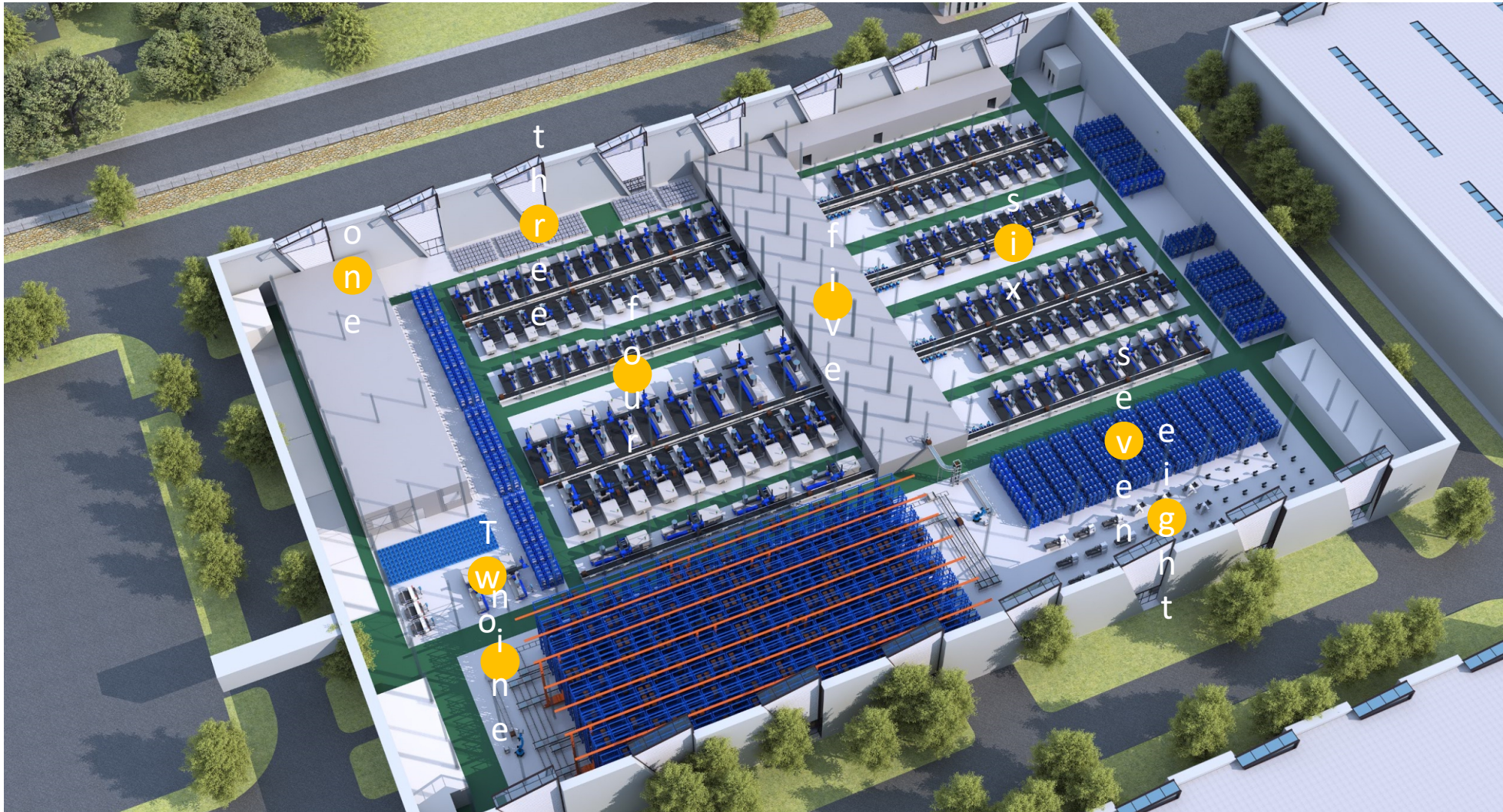
Angel has focused on clean drinking water for 33 years

33 YEARS COMMITTED TO PURIFIED DRINKING WATER



Introduction
of injection
molding
branch

Angel has focused on clean drinking water for 33 years



Intelligent injection molding factory:

The intelligent injection workshop covers an area of 20400m², with a height of 17.1m, and is a single-story steel structure workshop. It is mainly built for processing and production of core injection-molded parts of clean drinking water products, such as filter barrels, fixing clips, decorative plates, filter element seats, water receiving plates, etc. The injection molding machine adopts the latest generation of international servo hydraulic energy-saving machine, based on a brand-new digital platform and closed-loop control system, which has higher repetitive positioning accuracy, stronger dynamic response characteristics and better product quality. The newly planned central centralized feeding and water supply system interacts with the information of injection molding machines and peripheral auxiliary machines through the international common data interface, and cooperates with MES manufacturing execution system, thus realizing the informatization, transparency, digital monitoring and production of injection molding workshops. The automatic three-dimensional warehouse with 5000 storage positions realizes the automatic management of finished products in and out of the warehouse through roadway stacker, chain conveyor line and WMS system.

Division of injection workshop area:

1- spray painting processing area, 2- blow molding processing area, 3- raw material storage area, 4- injection molding processing area, 5- centralized feeding platform, 6- water-related parts processing area, 7- mold storage area, 8- mold maintenance/processing, 9- small box-type high-level warehouse.

Angel has focused on clean drinking water for 33 years

33 YEARS COMMITTED TO PURIFIED DRINKING WATER

The injection molding branch specializes in producing plastic and spray-painted accessories such as injection molded parts, spray-painted parts and water dispenser faucets from 0.5g to 6000mg. The factory now boasts 116 injection molding machines, 4 blow molding machines, 4 CNC machine tools, 4 spray-painted production lines (including PU line, UV line and primer line) and 2 faucet assembly lines, with an annual output of 20 million injection molded parts, more than 100,000 blow-molded parts and water dispenser faucets.

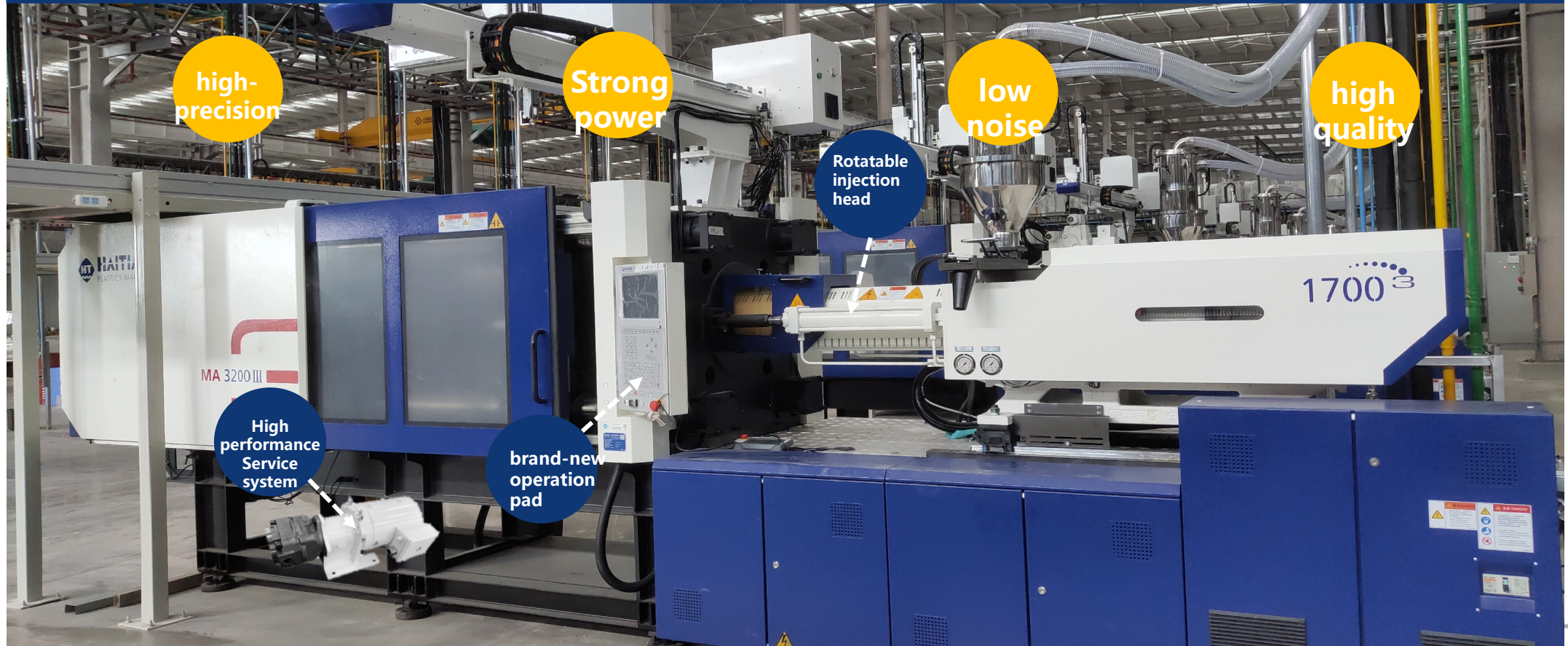
The injection factory has an independent dust-free injection workshop and a dust-free faucet production workshop. All water-related components are produced in a dust-free room, and the production process is strictly in accordance with the national and related product certification standards, and the water-related components are tested to ensure the safety of drinking water on a regular basis .



Angel focused on clean drinking water for 33 years

➤ "Intelligent Manufacturing Technology" Application _ Injection

"Third Generation Machine" MA series based on brand-new digital platform and closed-loop control system



Angel focused on clean drinking water for 33 years

- Application of "Intelligent Manufacturing Technology" _
- Centralized Source /Water Supply System



1. Centralized feeding system:

The central centralized feeding method is adopted to realize the separation of materials and machines, greatly improve the workshop environment, reduce the labor intensity of workers and improve the overall automation level.

2. centralized water supply system:

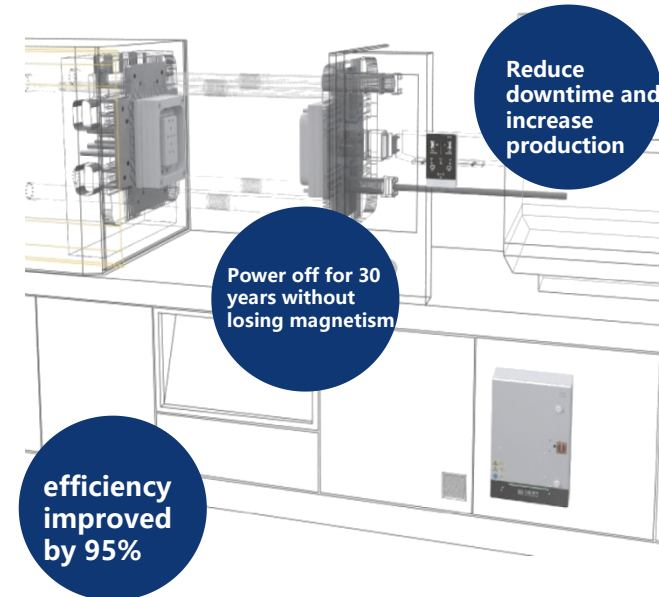
The pressure of each set is balanced, ensuring sufficient flow, improving the cooling effect of the mold and improving the production efficiency and quality. With frequency conversion energy-saving technology, the system can save energy about 50% compared with traditional methods.

Angel focused on clean drinking water for 33 years

- Application of “Intelligent Manufacturing Technology” _ Change mould quickly



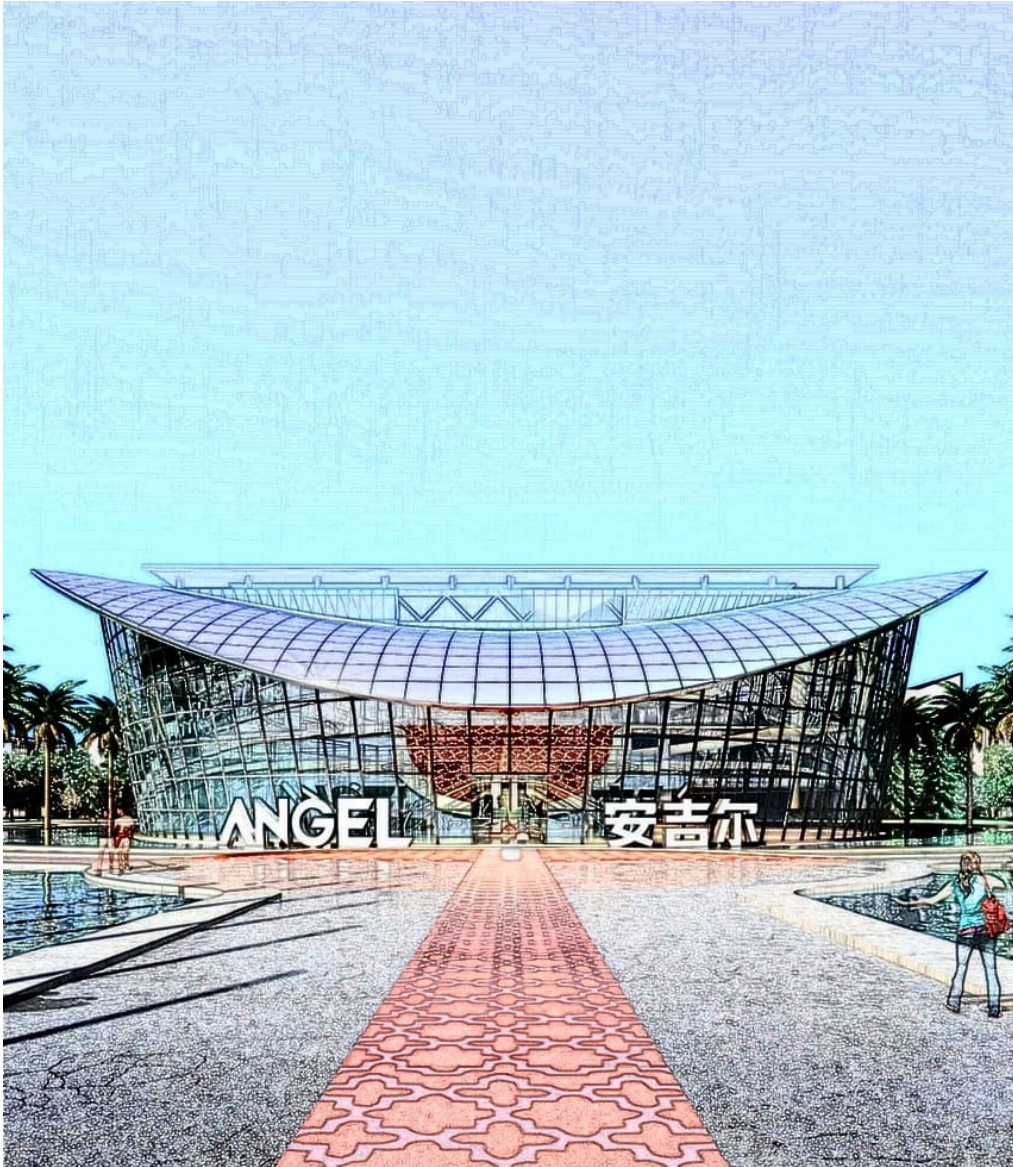
category	Traditional fixture	Rapid mould changing system
security	Not intelligent, the fault cannot be found.	Intelligent, abnormal early warning
reliability	bad	No maintenance, real-time feedback signal detection the working condition
Step up the point	No clamping force in the center	The clamping force is evenly distributed throughout the back plate of the mold.
Pinch effect	The pressure plate is easy to wear, and the uneven clamping force leads to the deformation of the die.	The clamping force is even, avoiding deformation during mold installation.
quality	The overall product quality is not high.	Good product consistency
Mold adaptability	The back plate of the mould must be made of the same specification.	Suitable for molds of any shape and size.
Durability of mold	The service life of the die is shortened due to the deformation of the die caused by clamping.	The mold is not easy to deform, and the service life is prolonged.
Energy saving and environmental protection	good	No energy consumption, no leakage and no noise in the working process.
Energy saving and cleanliness	No leakage, no need to clean.	No leakage, no need to clean.



Angel has focused on clean drinking water for 33 years

- Application of "Intelligent Manufacturing Technology" _ Peripheral Auxiliary Machines





Introduction of metal branch factory

Angel focused on clean drinking water for 33 years



Brief introduction of metal branch factory:

The intelligent metal workshop covers an area of 21600m², with height of 17.1m, and is a single-story steel structure workshop. It is mainly used for the processing and production of core components and various metal fittings of domestic and commercial water dispensers, such as metal hot and cold tanks, shells of side plates, side plates of commercial machines, special-shaped water tanks and pipe parts. In terms of production technology, we use advanced laser welding technology to replace the original argon arc welding technology to ensure the quality and production efficiency of core components to the greatest extent. At the same time, we introduce robot stamping, robot stretching and other equipment to reduce the manufacturing cost of the whole process through unmanned local processes. The overall layout planning, from blanking, stamping, stretching, welding, cleaning and inspection, "one flow" production, ensures the output per unit area and production efficiency to the greatest extent.

Angel focused on clean drinking water for 33 years

33 YEARS COMMITTED TO PURIFIED DRINKING WATER

➤ "Intelligent Manufacturing Technology" Application _ Laser Welding



argon arc welding

advantage

1. High current density
2. Heat concentration
3. High deposition rate



Laser welding

advantage

1. Heat concentration
2. the welding workpiece has little thermal deformation.
3. the weld strength is high
4. the weld is small and beautiful
5. the welding speed is fast

Welding efficiency

Has little influence on the subsequent process.

The whole process cost is lower.

Angel focused on clean drinking water for 33 years

33 YEARS COMMITTED TO PURIFIED DRINKING WATER

➤ "Intelligent Manufacturing Technology" Application _ Laser Cutting Equipment



Tru laser cutting equipment:

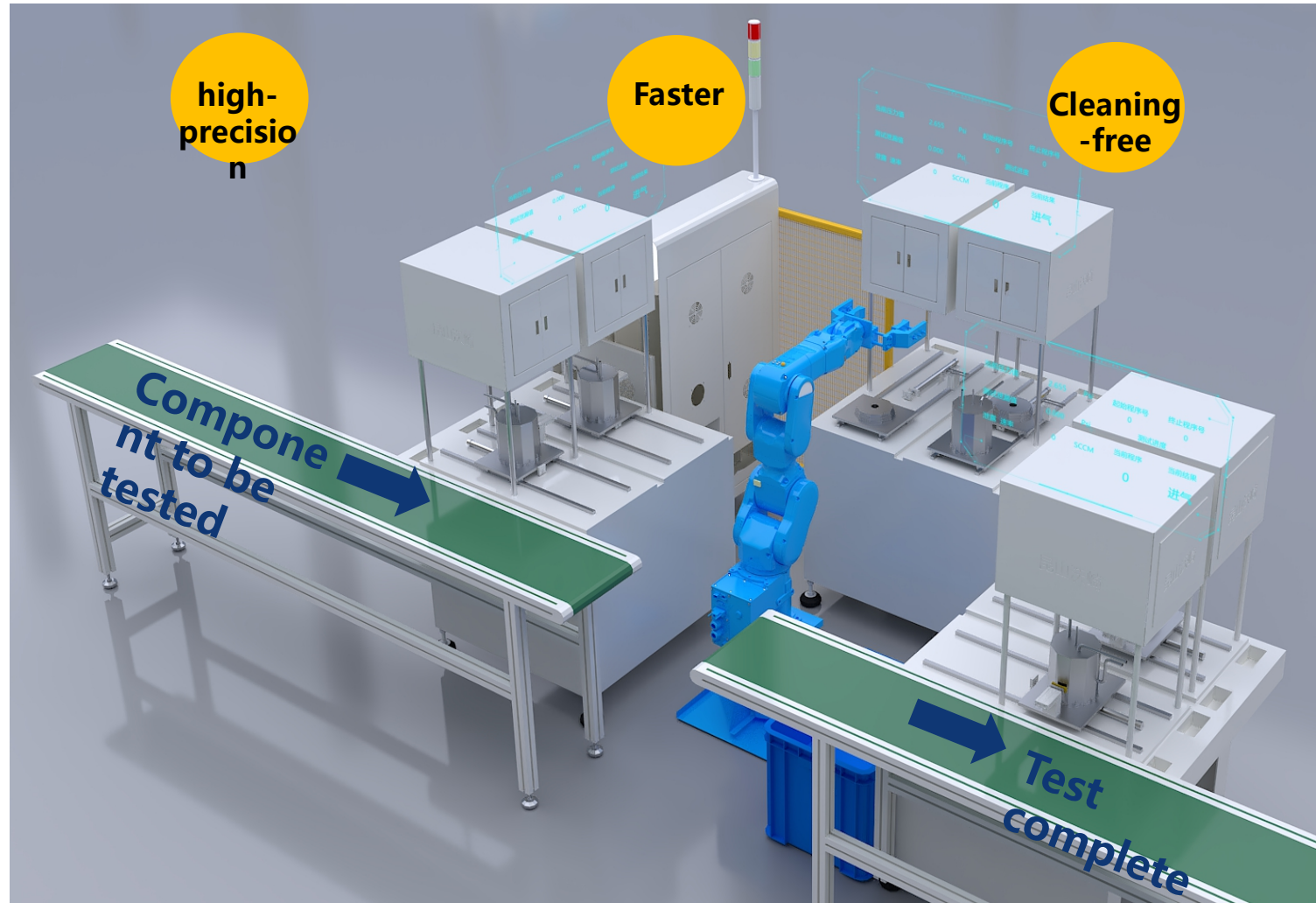
1, extremely high typesetting accuracy

2. Flexible operation

3. Optimal utilization rate of

Angel focused on clean drinking water for 33 years

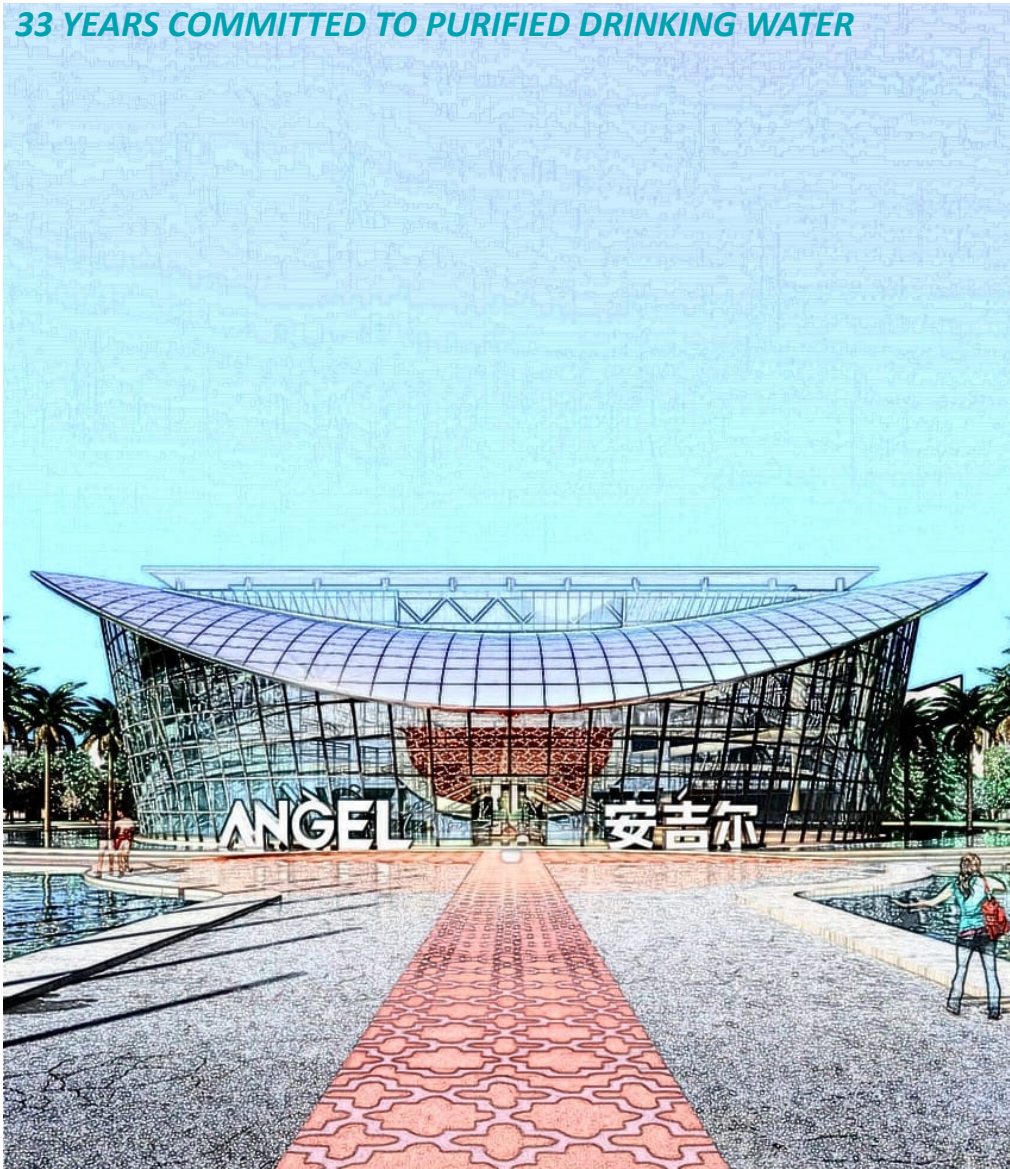
➤ Application of "Intelligent Manufacturing Technology" _COSMO waterless detection



Imported COSMO automatic leak detection equipment injects pressurized air into the test object (workpiece) and maintains the pressure. The instrument automatically measures the change of its internal pressure to detect whether the product leaks. The leak detection accuracy is higher, the detection efficiency is improved, and at the same time, the increase of cleaning procedures caused by soaking the workpiece in water is avoided.

Angel focused on clean drinking water for 33 years

33 YEARS COMMITTED TO PURIFIED DRINKING WATER



Introduction of assembly plant

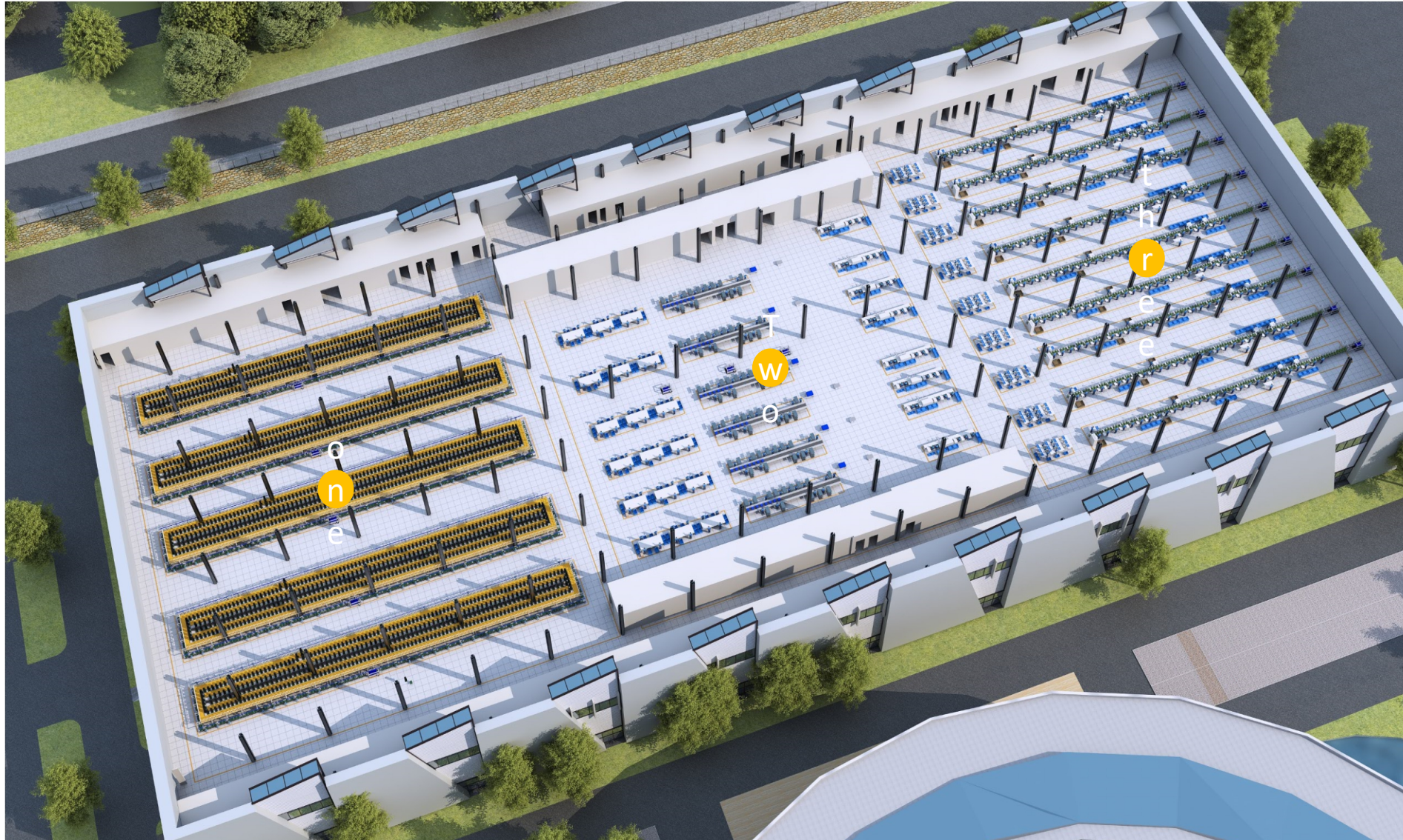
Angel focused on clean drinking water for 33 years



1F area division of assembly workshop 1:

- 1- The whole machine packing area
- 2- Finished product storage area
- 3- Business Machine Pre-installation Area
- 4- Business Machine Production Area
- 5- Pick and Match Center
- 6- Raw Material Storage Area
- 7- Water purification packing area

Angel focused on clean drinking water for 33 years



2F area division of
assembly workshop 1:

1- Production Area of
Drinking Water Branch

2- Pre-assembly

/Distribution Center

3- Production Area of
Water Purification Branch

Angel focused on clean drinking water for 33 years

The business machine factory has powerful production capacity to produce various products, including commercial direct drinking machines, commercial supporting pipeline machine, commercial boiling water machines, large-scale pure water machines, and the overall layout of machines in various commercial application scenarios to meet the needs of different scenarios and different customer groups. Focusing on customers' demands, the business machine factory always adheres to the business philosophy of quality first and customer first, and makes every product carefully with the spirit of great country craftsmen to ensure the stability and consistency of products leaving the factory.

Closed microbial control is implemented in the workshop of commercial machine factory to ensure effective sterilization in the whole process of production and processing, and the manufacturing process and ex-factory inspection are carried out in strict accordance with national standards. The workshop has leading production facilities in the industry, high-precision assembly line and robot packaging, not only improves the labor efficiency, so that employees can produce products with pleasant taste, but also reduces the labor intensity, so that employees can produce products with pleasant taste.



Automatic assembly line



Functional detection line



Automatic palletizing of manipulator

Angel focused on clean drinking water for 33 years

The water purification plant is specialized in production of household pipeline machine, water purifiers, etc. The designed final production capacity is 2 million water purifiers and auxiliary products per year. Based on customer satisfaction, the factory pursues excellent quality, quick action and lean production, and takes the mission of building a first-class water purification workshop in China. Since its establishment, it has been based on high-end production, and the workshop adopts a closed dust-free workshop. When the first product series was imported, a unique product function



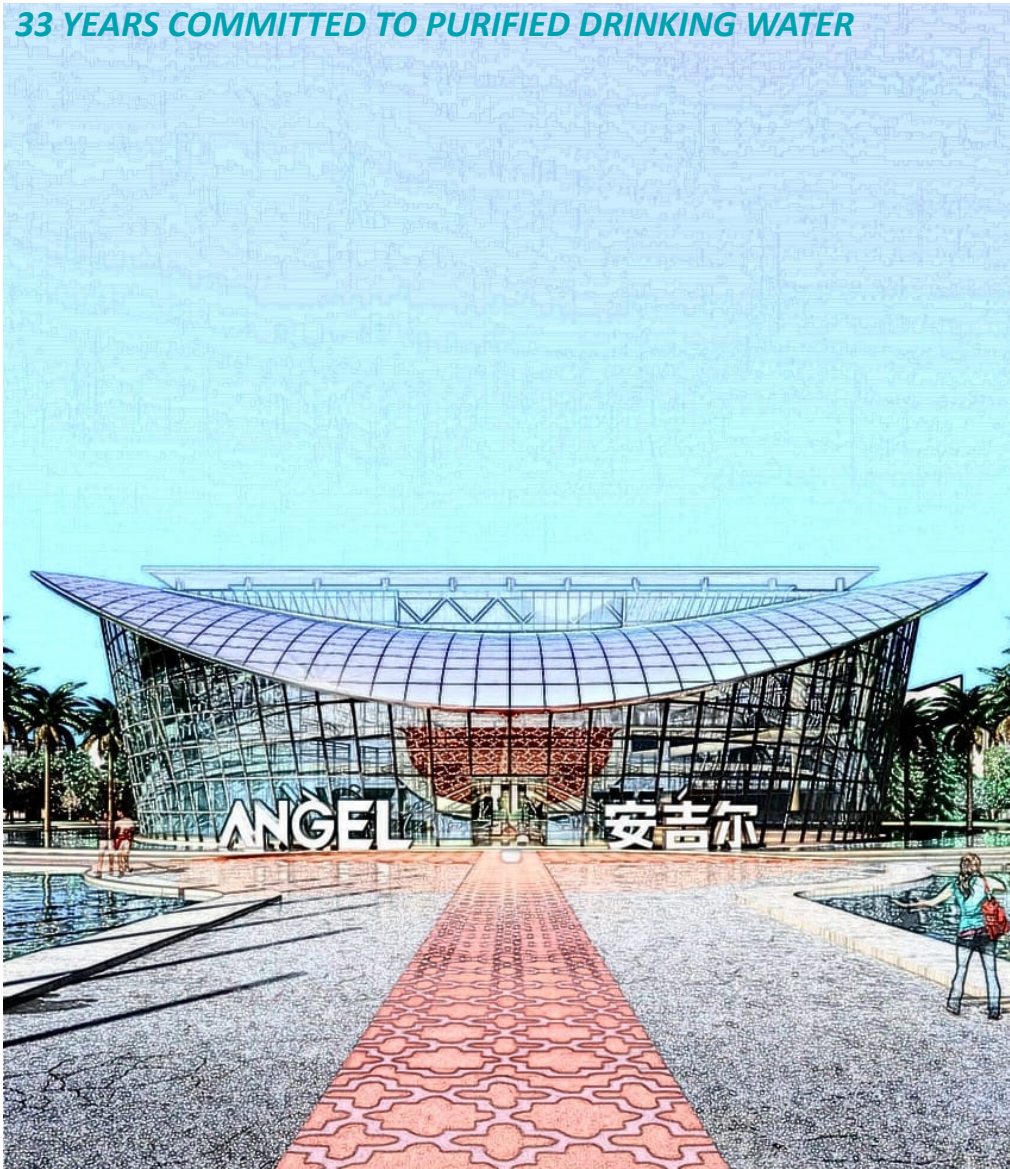
Angel focused on clean drinking water for 33 years

The drinking water branch mainly produces domestic cold and hot water dispensers, direct drinking machines and other products, and the designed final production capacity is 1.5 million water dispensers and supporting products per year. The intelligent assembly workshop covers an area of 18000m², and the workshop adopts a flow and three-dimensional layout. Outsourcing, metal and injection molding parts are sent to the distribution center in the middle of the second floor of the workshop for modular pre-assembly. Modular components connect with flexible



Angel focused on clean drinking water for 33 years

33 YEARS COMMITTED TO PURIFIED DRINKING WATER



Description of main products

Commercial products-customer-centered solutions

CUSTOMER - CENTRIC SOLUTION



- Selection of well-known enterprises and institutions in China



- International top brand equipment suppliers



Household drinking water product series



ANGEL 安吉尔
高端净水专家

Angel focused on clean drinking water for 33 years

33 YEARS COMMITTED TO PURIFIED DRINKING WATER



**Scientific
research and
technical
strength**

Angel's Customer-centered Core Technology Innovation



For 35 years, Angel has persisted in scientific and technological innovation.

ANG

高站

Obtained and kept **more than 700** national patents.

More than 30 invention patents have been authorized.

Close technical cooperation with domestic first-class scientific research institutes.

安吉尔 ANGEL

高端净水专家

core
technology

ANGEL 安吉尔

高端净水专家

清华大学

Graphene filter material



浙江大学
ZHEJIANG UNIVERSITY

Membrane technology
innovation



华南理工大学
South China University of Technology

New water purification
technology



西南交通大学
Southwest Jiaotong University

Application of
antibacterial materials

PATENTED TECHNOLOGY, INTERNATIONALLY CERTIFIED, NATIONAL & INDUSTRY STANDARD ESTABLISER

768 National innovation technology patents

30 International quality system certifications

14 National and industry standards was made with Angel together



欧盟CE认证



美国UL认证



中国CCC认证



中国质量 CQC认证



英国质量 BSI认证



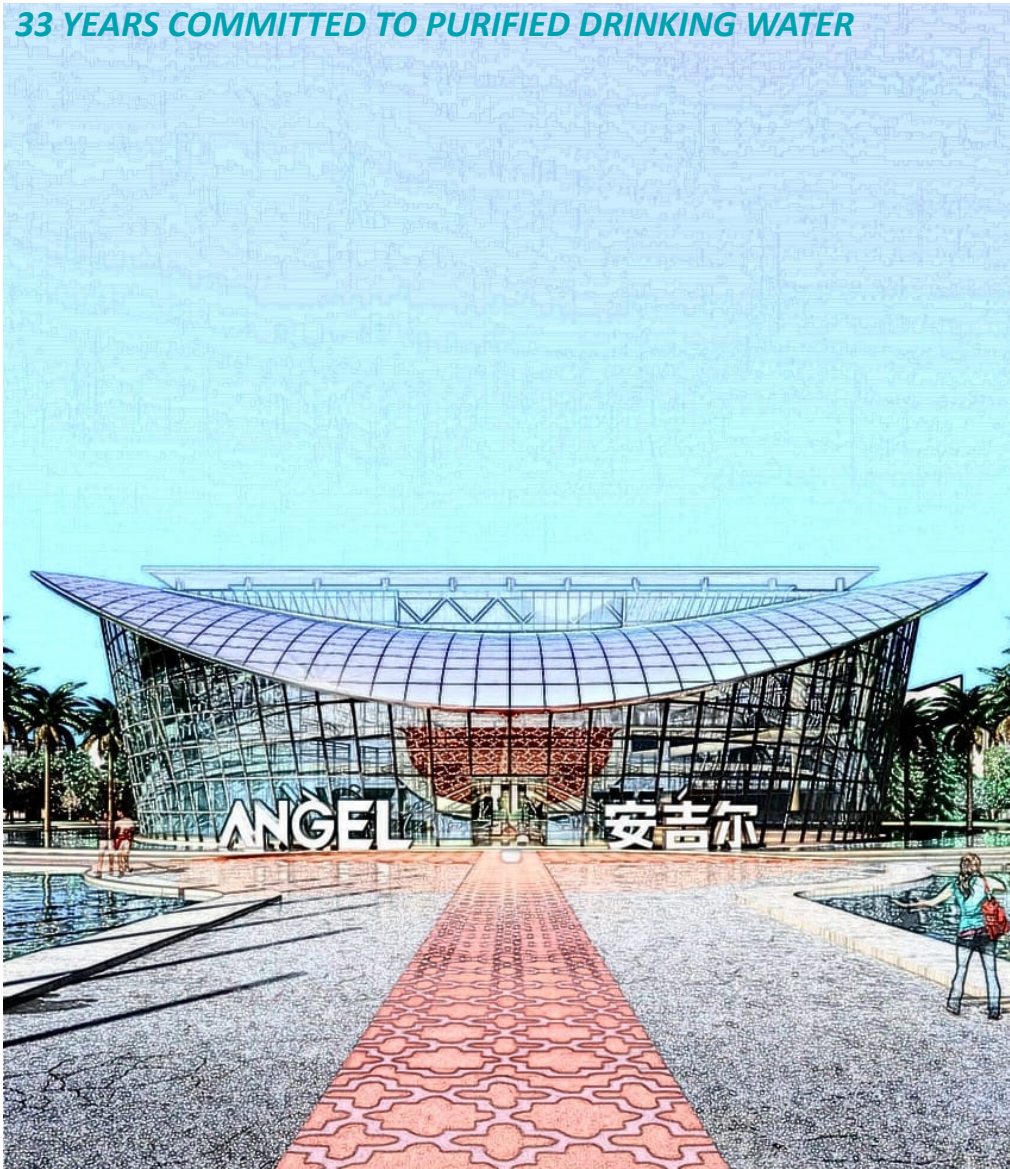
National high-tech enterprise



Certified by American Water Quality Association

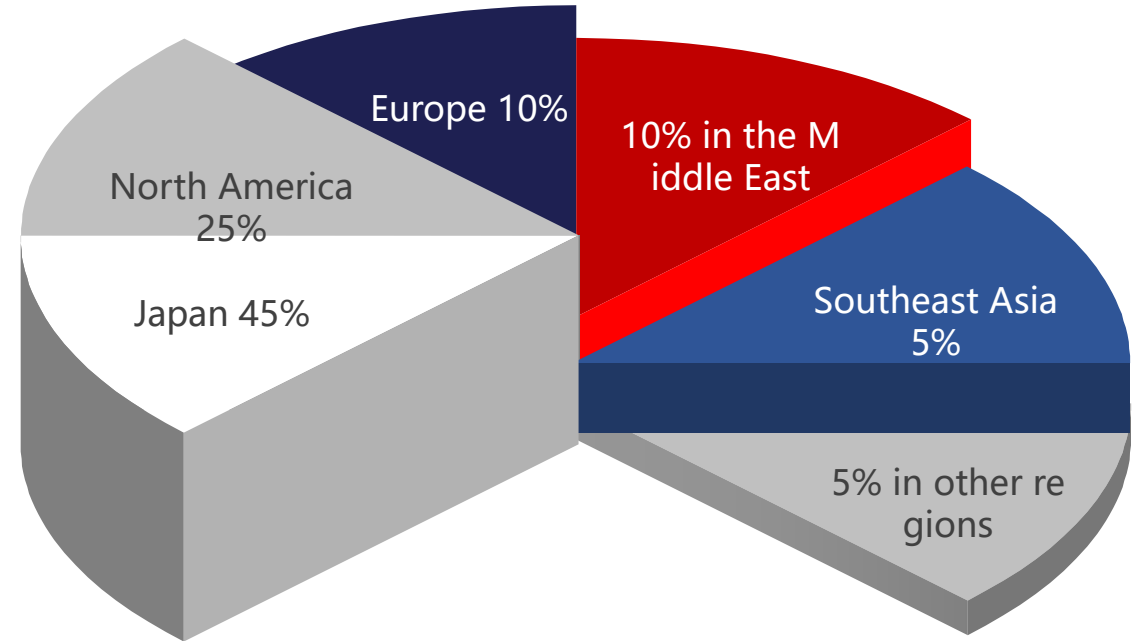
Angel focused on clean drinking water for 33 years

33 YEARS COMMITTED TO PURIFIED DRINKING WATER



Main market description

global market



Main market description

At present, the company's products are sold in more than 60 countries and regions around the world, and are fascinated with nearly 400 professional customers. At the same time, it is also the first manufacturer in China to sell water dispensers to Japan in batches, and the product quality has been recognized by customers.

High-end customers



Quan Qiu zhi hui



- Five-year strategic landing plan
- DTC cost reduction
- End to end quality improvement
- Marketing transformation 1.0



- IPD integrated product development
- MP market planning



- brand positioning



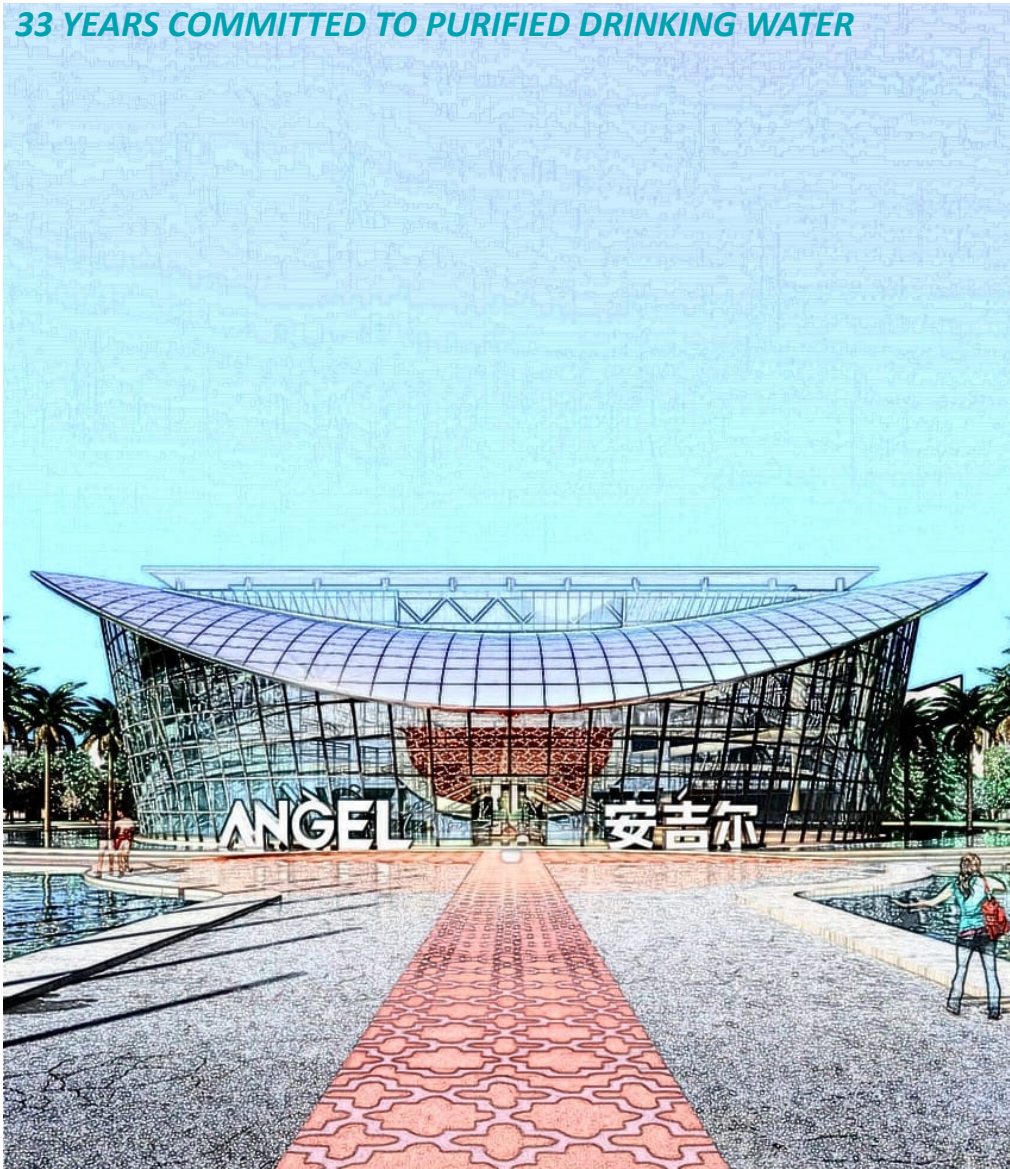
- Single machine-collectivization
- Internal-external partners-consumers
- Call center AI intelligence
- Internet of things

ANGEL 安吉尔

高端净饮水专家

Angel focused on clean drinking water for 33 years

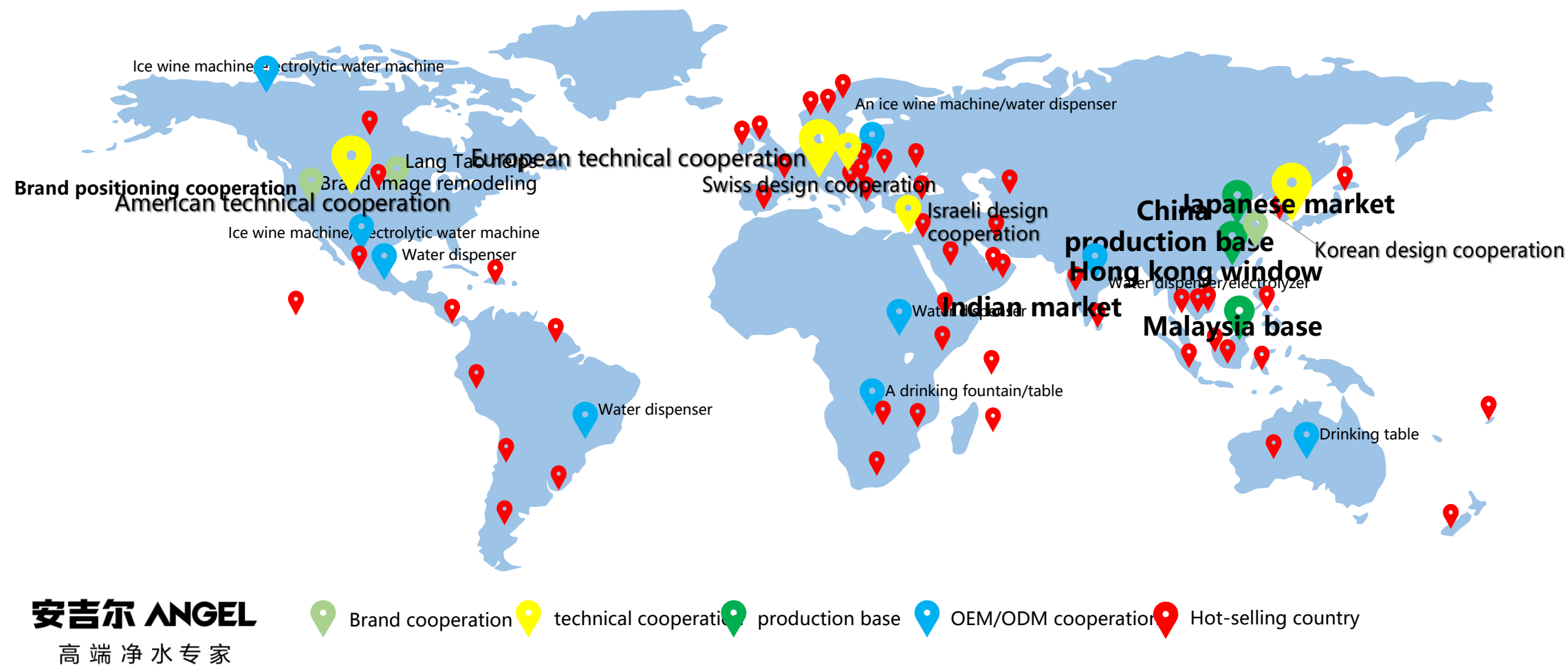
33 YEARS COMMITTED TO PURIFIED DRINKING WATER



Future development

Global strategic layout

CLOBAL STRATEGY LAYOUT



Rendering picture



Factory vision goal



Beautiful
factory



Maxnerva
云智汇科技服务

Make every effort to build Shaoxing
Angel Digital Factory

ANGEL 安吉尔
高端净水专家



Digital factory simulation design

environmentally friendly concept

安吉尔 ANGEL

高端净水专家

